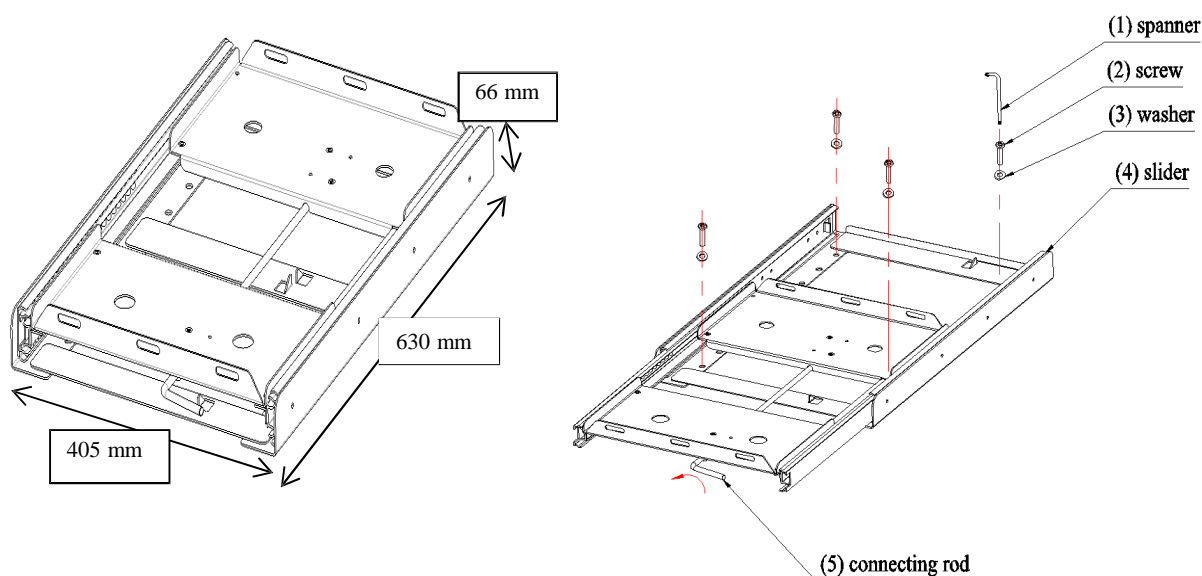


## USER MANUAL – SLIDING GUIDE



### 1- INSTALLATION INSTRUCTIONS

The SLIDING GUIDE has to be secured at a minimum of 6 equally spaced points across the base frame. Depending on the surface that the guide is being attached to, it can be secured using self-tapping screws or nuts and bolts through the predrilled holes located along the base frame.

Install the fridge only once the sliding guide is secured in position.

Steps:

- Place the sliding guide in position where you want to install it with the release handle facing in the direction that the sliding guide is to pull out from.
- Extend the sliding guide slowly by rotating the release handle in an anti-clockwise direction until fridge tray is released.
- Commence installing the fasteners starting from the rear and moving forward using the pre drilled holes.
- If the sliding guide is not moving smoothly, loosen the fasteners slightly (it may happen especially if the mounting surface is covered in a carpet material).
- When all fasteners are in place the installation is completed.

### 2- OPERATION

Locate the 4 feet on the bottom of the Travel Box into the holes located on the sliding guide and secure the fridge (fasten the belts tight). Grip the handle of the fridge and rotate the release handle in an anti-clockwise direction. Pull toward until the Travel Box starts moving. The release handle can be allowed to return to its standard position as the fridge is being pulled forward. There are 3 blocking positions.

**3- WARNING:** the maximum load is 100 Kg.